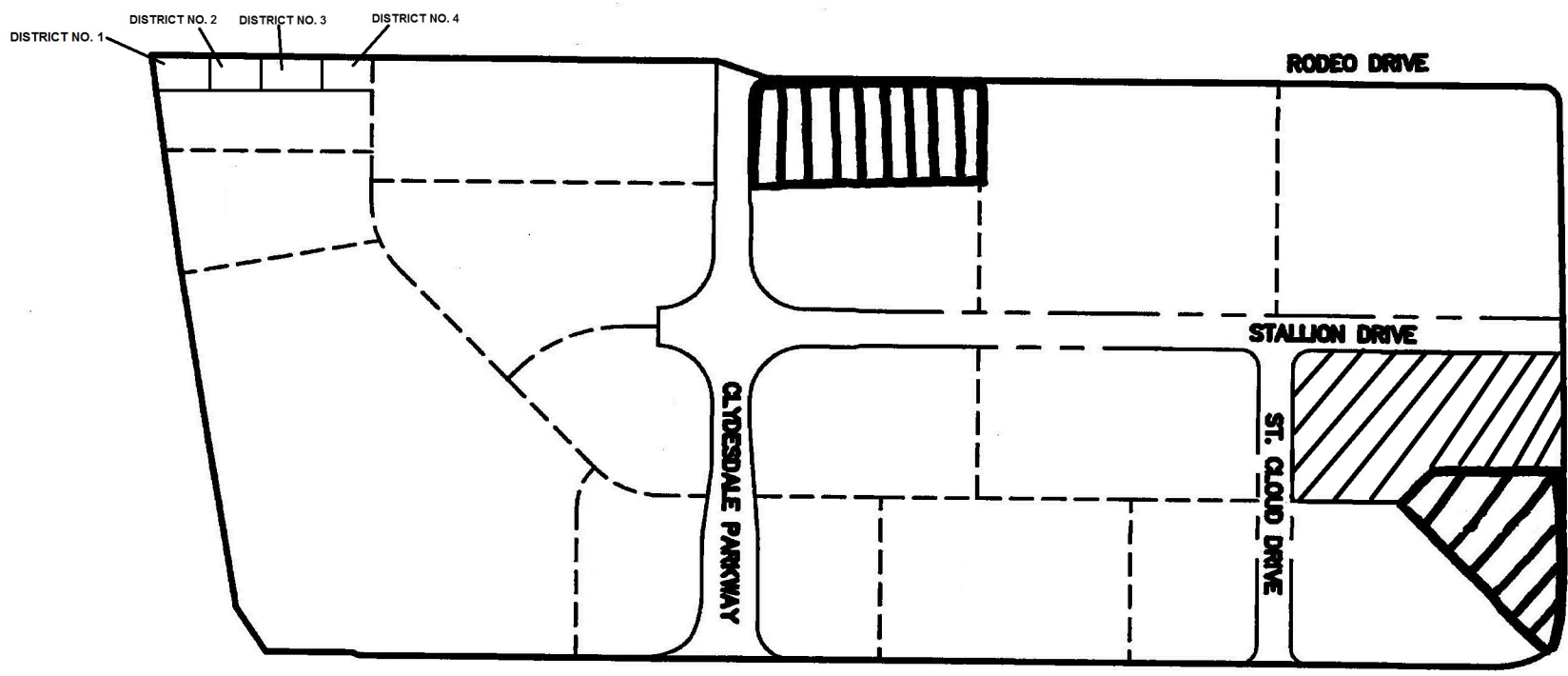


EAGLE CROSSING LOVELAND METROPOLITAN DISTRICT 1-4

INITIAL DISTRICT BOUNDARIES

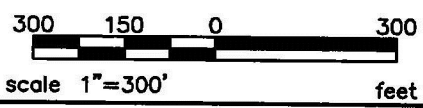


 - EXCLUDED

EXHIBIT A
DATE: JUNE 27, 2014
JOB NO. 732.0023.02
SHEET 1 OF 2

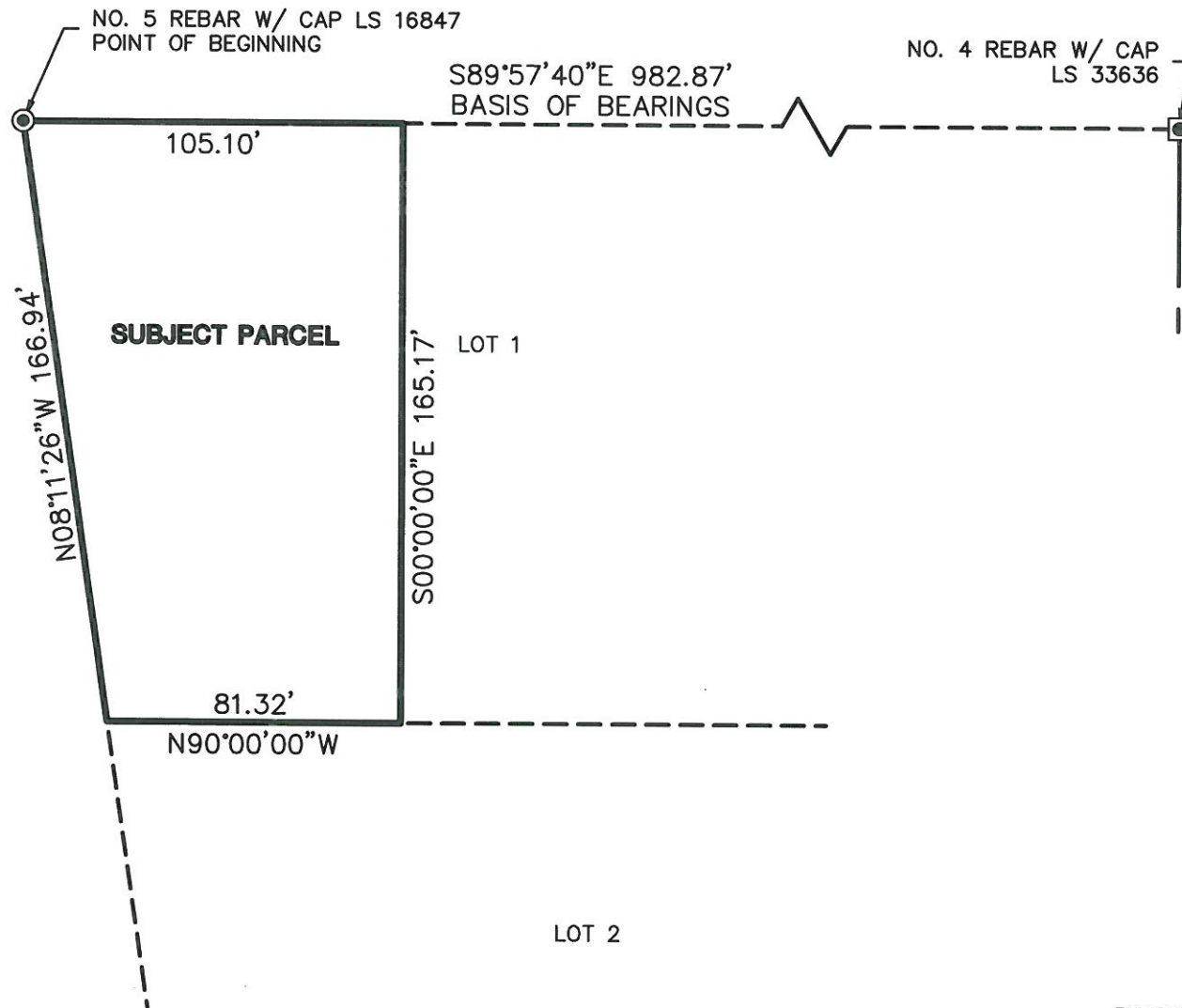
TST TST, INC. CONSULTING ENGINEERS

780 Whalers Way, Bldg C, Suite 200
Fort Collins, Colorado
Phone: 970.226.0557
Fax: 970.226.0204



K:\803\002\05 Drawings\Exhibits\Metro District Base File

EAGLE CROSSING LOVELAND METROPOLITAN DISTRICT 1



scale 1"=50' feet

EXHIBIT A
DATE: AUG. 8, 2014
JOB NO. 0803.0300.00
SHEET 1 OF 8

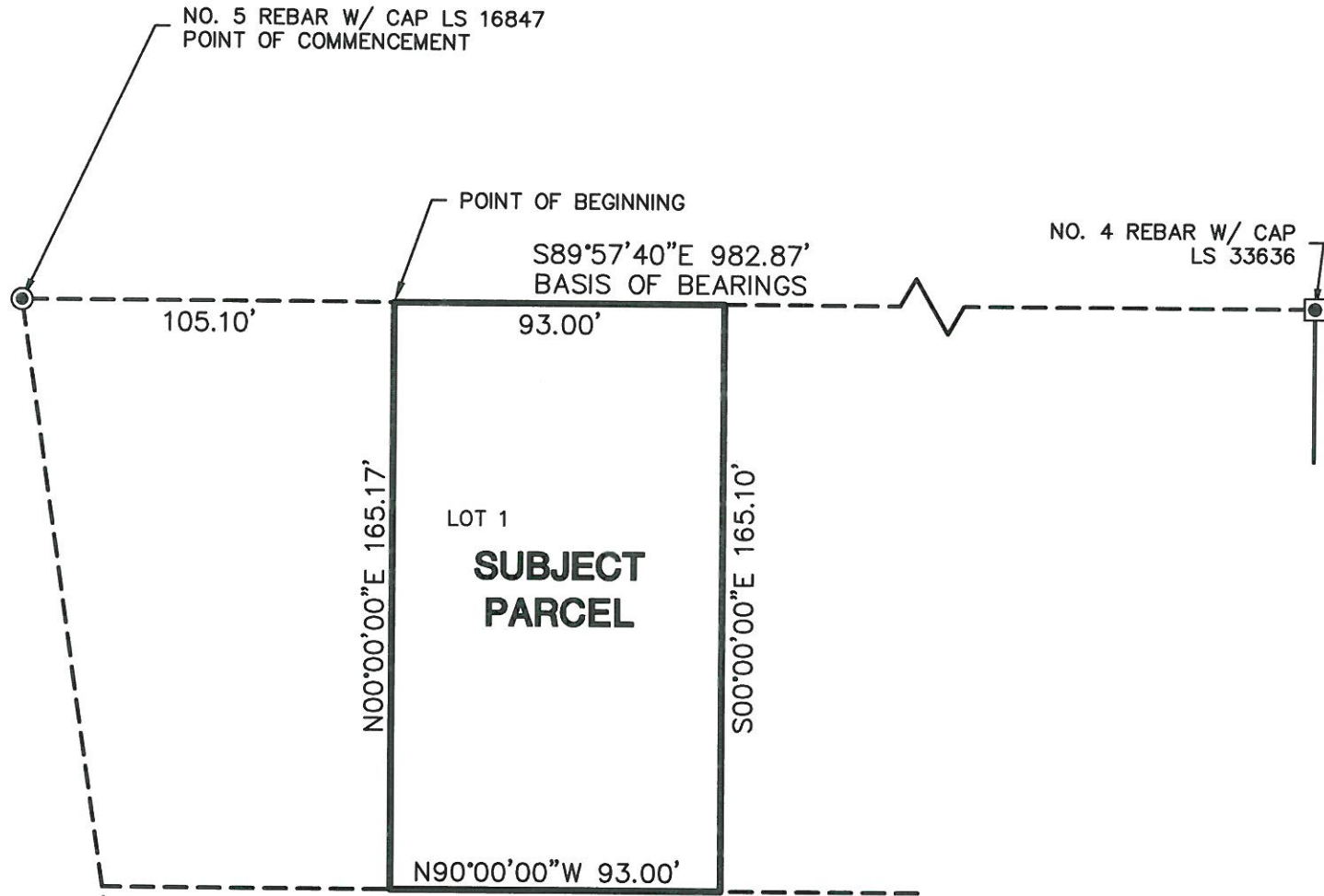
TST TST, INC. CONSULTING ENGINEERS



760 Whalers Way, Bldg C, Suite 200
Fort Collins, Colorado
Phone: 970.226.0557
Fax: 970.226.0204

k:\803\0300\05 Drawings\Exhibits\Loveland Metro District Legals

EAGLE CROSSING LOVELAND METROPOLITAN DISTRICT 2



scale 1"=50' feet

EXHIBIT A
DATE: AUG. 8, 2014
JOB NO. 0803.0300.00
SHEET 3 OF 8

TST TST, INC. CONSULTING ENGINEERS

760 Whalers Way, Bldg C, Suite 200
Fort Collins, Colorado
Phone: 970.226.0557
Fax: 970.226.0204

EAGLE CROSSING LOVELAND METROPOLITAN DISTRICT 3

NO. 5 REBAR W/ CAP LS 16847
POINT OF COMMENCEMENT

POINT OF BEGINNING

NO. 4 REBAR W/ CAP
LS 33636

S89°57'40"E 982.87'
BASIS OF BEARINGS

291.10' 198.10'

93.00'

LOT 1

**SUBJECT
PARCEL**

N00°00'00"E 165.10'

S00°00'00"E 165.04'

N90°00'00"W 93.00'



scale 1"=50' feet

EXHIBIT A
DATE: AUG. 8, 2014
JOB NO. 0803.0300.00
SHEET 5 OF 8

TST TST, INC. CONSULTING ENGINEERS

760 Whalers Way, Bldg C, Suite 200
Fort Collins, Colorado
Phone: 970.226.0557
Fac: 970.226.0204

K:\803\0300\05 Drawings\Exhibits\Loveland Metro District Legals

EAGLE CROSSING LOVELAND METROPOLITAN DISTRICT 4

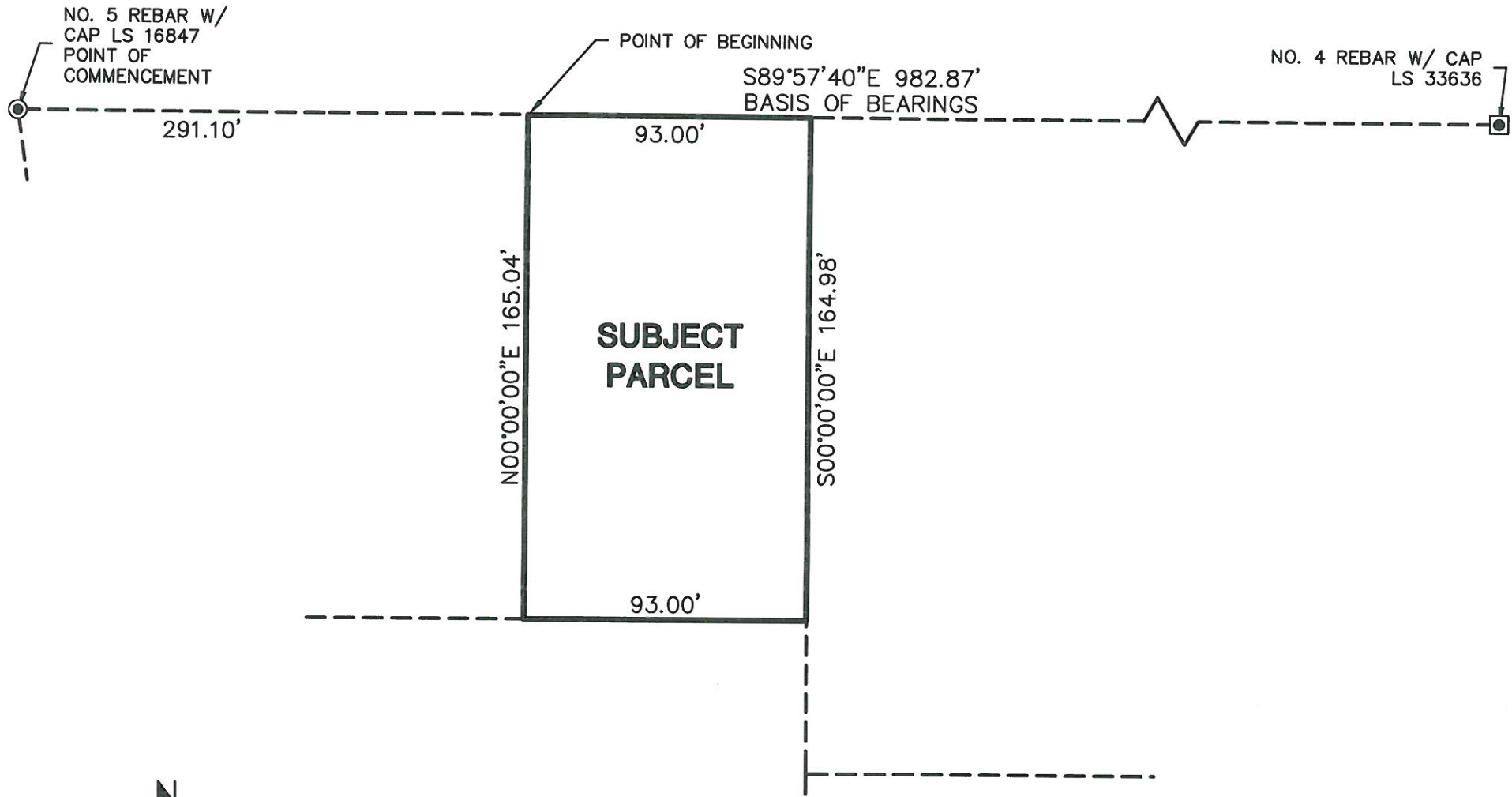


EXHIBIT A
DATE: AUG. 8, 2014
JOB NO. 0803.0300.00
SHEET 7 OF 8

TST TST, INC. CONSULTING ENGINEERS

760 Whalers Way, Bldg C, Suite 200
Fort Collins, Colorado
Phone: 970.226.0557
Fax: 970.226.0204